

Job Name:

Customer:

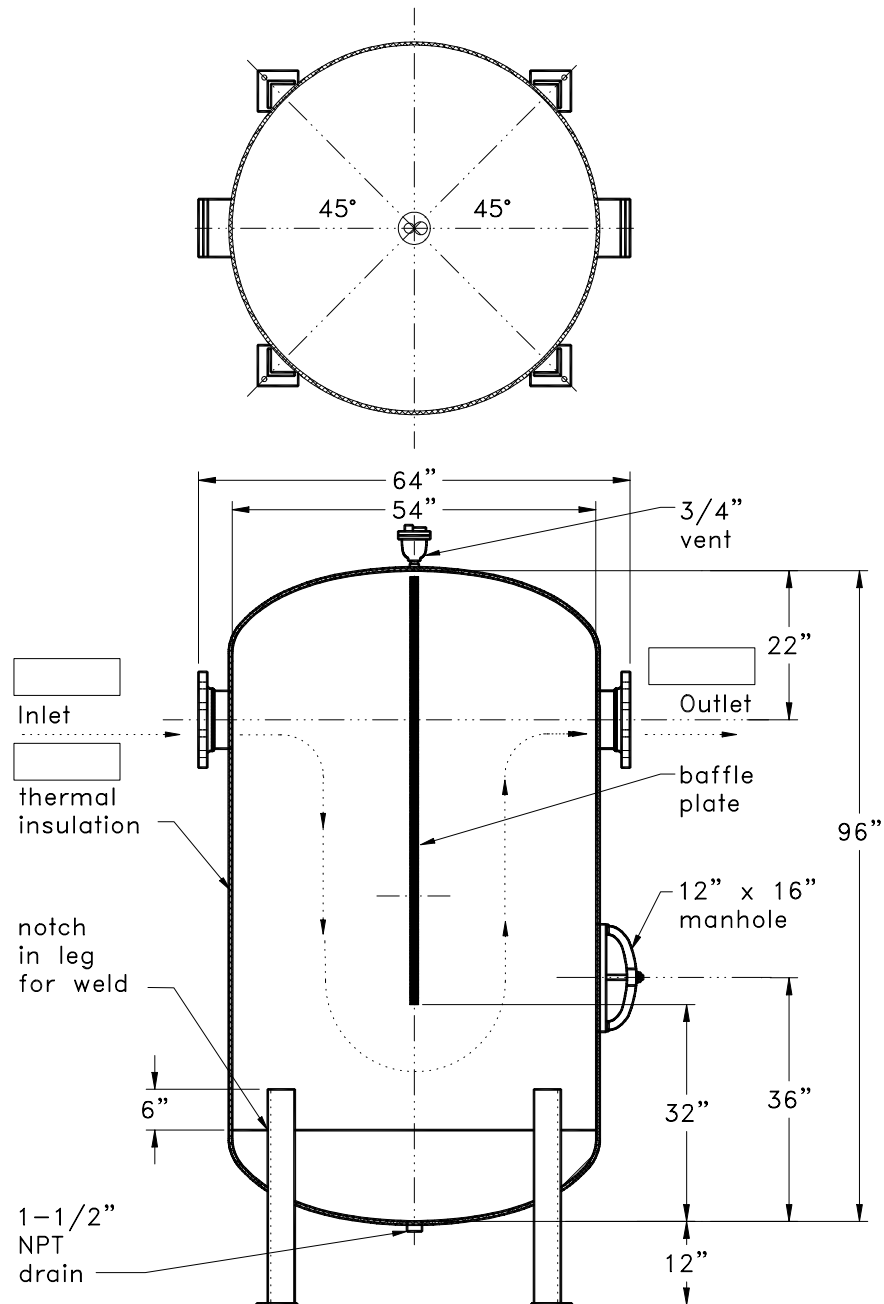
Representative:

Approved By: Date:



P.O. Box 55
Cheswick, Pennsylvania 15024

724-274-5430
Fax: 724-274-5448



V850CWB-SL

(4) 4"x4"x1/2"
steel angle legs and
6"x6"x1/2" baseplates w/
3/4"Ø hole in each plate
on 62-5/8" boltcircle