

Job Name:

Customer:

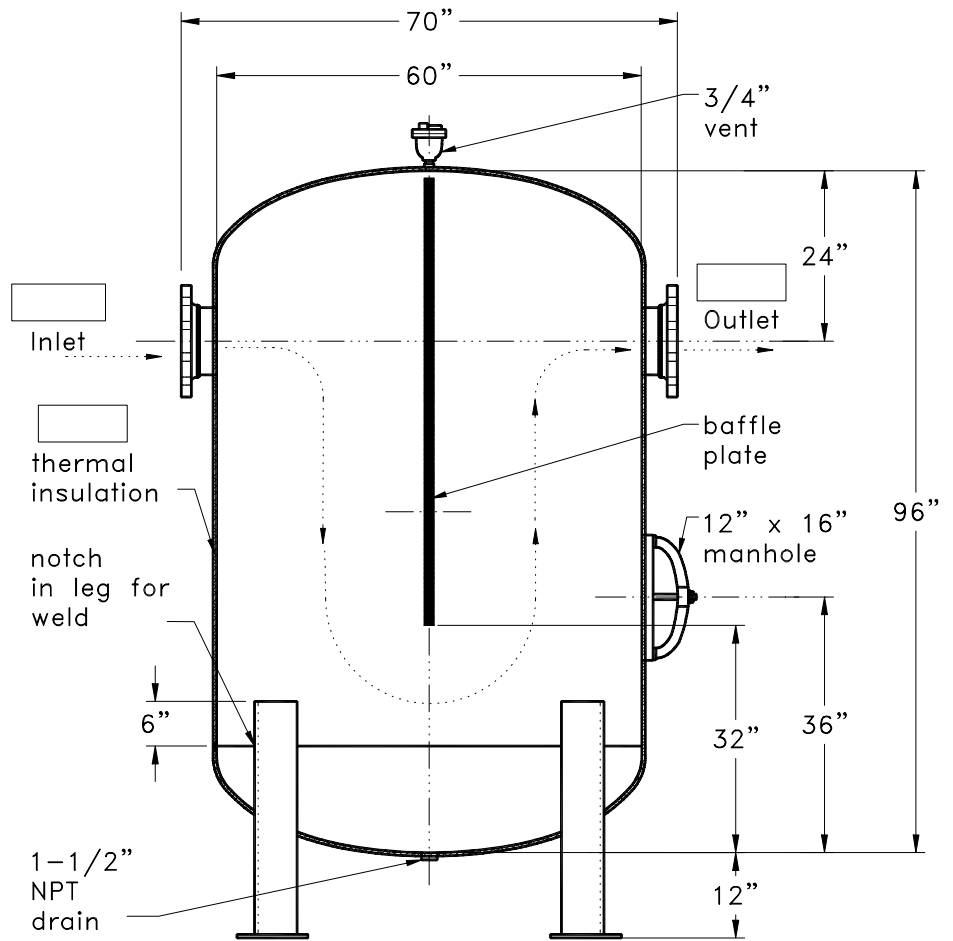
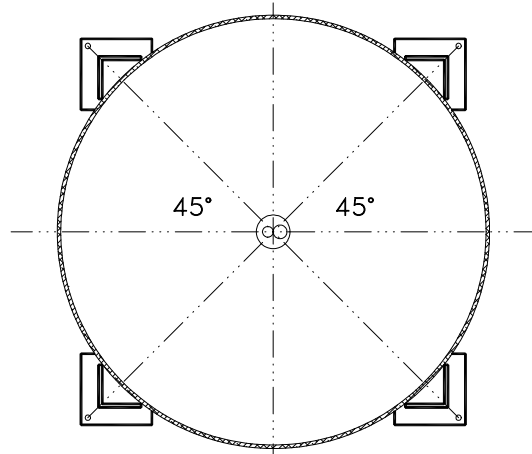
Representative:

Approved By:  Date:



P.O. Box 55  
Cheswick, Pennsylvania 15024

724-274-5430  
Fax: 724-274-5448



(4) 6"x6"x1/2"  
steel angle legs and  
10"x10"x1/2" baseplates  
w/ 3/4"Ø hole in each  
plate on 74" boltcircle

V1040CWB-SL