

Job Name:

Customer:

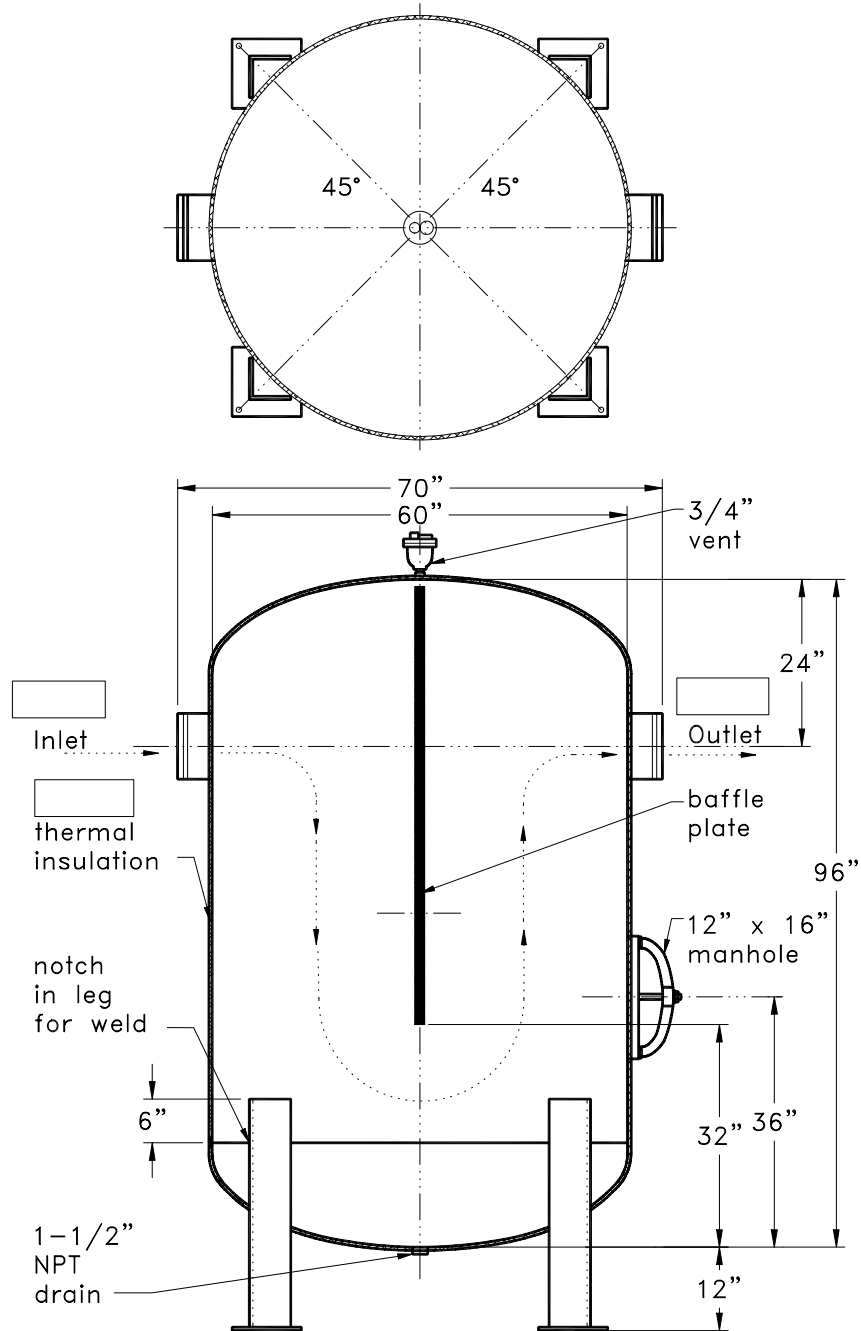
Representative:

Approved By: Date:



P.O. Box 55
Cheswick, Pennsylvania 15024

724-274-5430
Fax: 724-274-5448



(4) 6"x6"x1/2"
steel angle legs and
10"x10"x1/2" baseplates
w/ 3/4"Ø hole in each
plate on 74" boltcircle

V1040CWB-G-SL