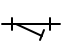
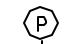

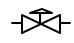
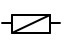
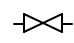
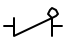
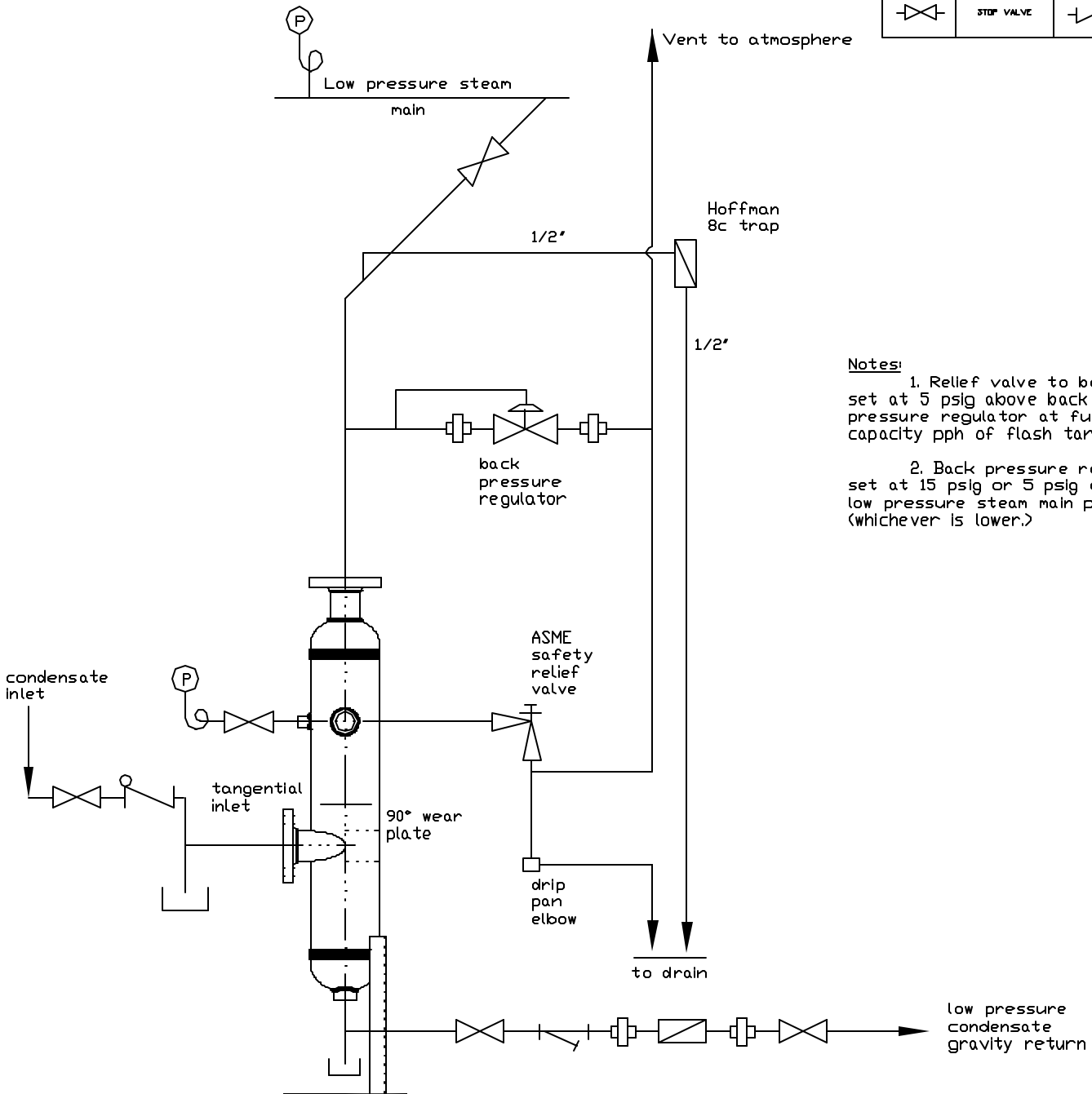
	PIPE UNION OF FLANGES		STRAINER
	PRESSURE GAUGE		RELIEF VALVE
	CONTROL VALVE		STEAM TRAP
	STOP VALVE		CHECK VALVE



Notes:

1. Relief valve to be ASME set at 5 psig above back pressure regulator at full capacity pph of flash tank.
2. Back pressure regulator set at 15 psig or 5 psig above low pressure steam main pressure (whichever is lower.)

Cemline Corporation
ASME Vertical Flash Tank with flash recovery